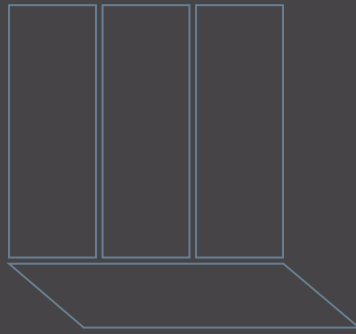


VASTA

STONE



ARCHITECTURAL
SURFACES

VASTA

STONE

Separate but intertwined by elements and natural phenomena, the collection follows the notion of Terra Luna concept launched in Milan in 2022. Like the shadows and lights in the night sky the pattern has unique swirls and undulations which attract attention and contemplation. Warmer, early tone colourways in turn, reflect the formations of stone over time. It narrates a story of interrelation with nature that is both inviting and captivating. There is something truly fascinating to be created by harnessing the otherness of this collection.

Un movimento ricco e fluido che ci lega alla Terra e connette ai pianeti. Un progetto attuale e di tendenza, che sublima il bisogno dell'uomo di guardare in alto verso il cielo per trovare un posto dove sognare e vivere. Colori che partono dai toni più basilari della terra e arrivano alle sfumature del blu profondo. Un contrasto di lucido e satinato accompagnato a basi sia opache che materiche.

THREE FACES IN 160x320 TRE FACCE IN 160x320



COSMIC - OTTANIO



COSMIC - TERRA BRUCIATA



COSMIC - CAFFÈ LATTE



COSMIC - ROSSO



ARCHITECTURAL SURFACES

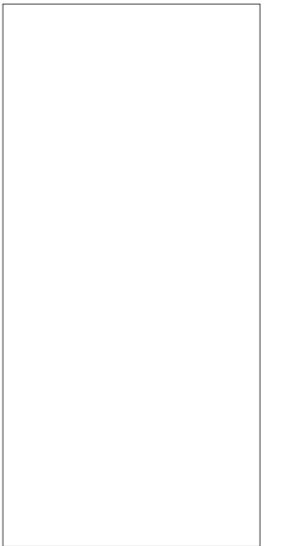
COSMIC

VASTA STONE

SURFACE FINISHES FINITURE DI SUPERFICIE

LUX

SIZES FORMATI



160x320 cm

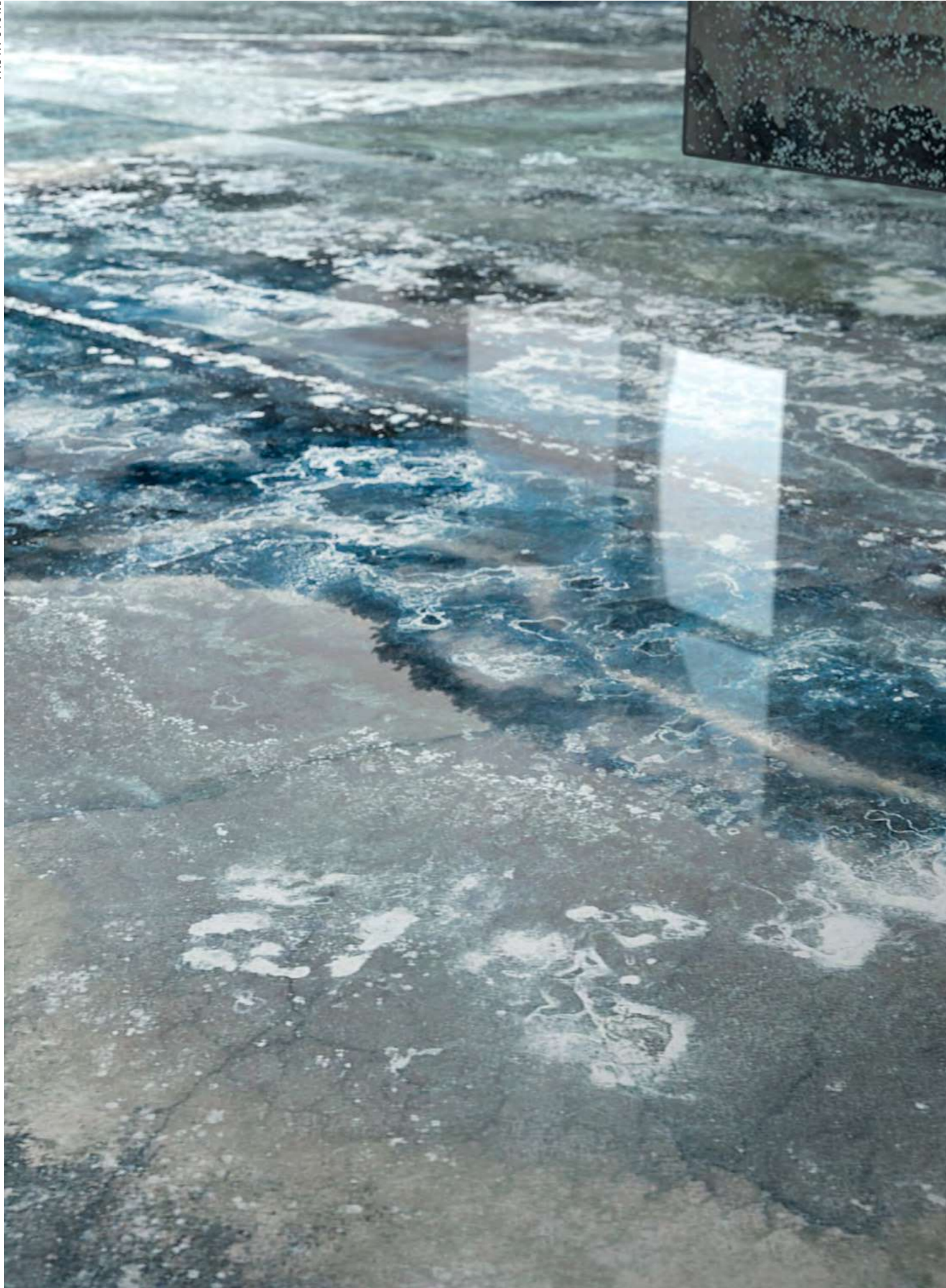
THICKNESSES SPESSORI

6mm | 12mm | 20mm



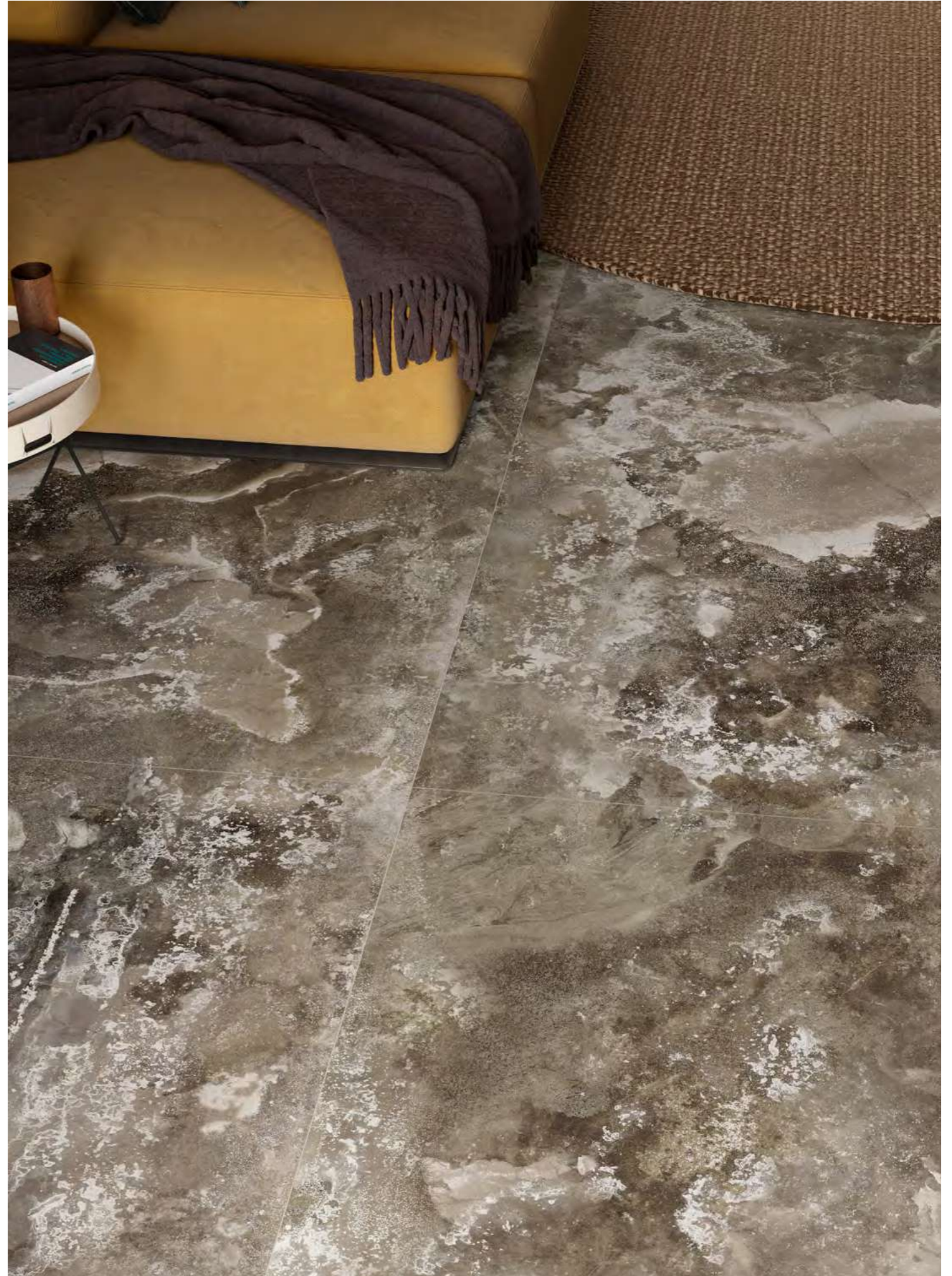
VASTA STONE





VASTA STONE





VASTA STONE







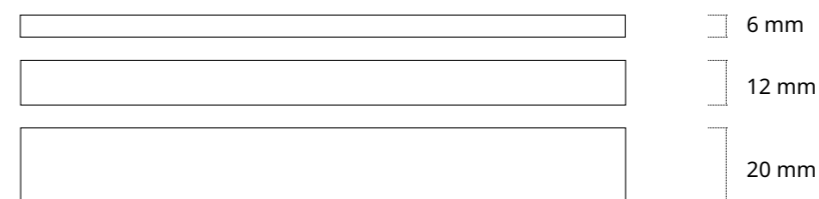
Vasta Stone
Sintered stone with extraordinary characteristics
Pietra sinterizzata dalle straordinarie caratteristiche

MORE THAN 30 GRAPHICS, 3 FINISHES, 3 THICKNESSES
Vasta Stone is the new and revolutionary compact and sintered surface born to give an answer to architectural design and furnishing.

PIÙ DI 30 GRAFICHE, 3 FINITURE, 3 SPESSORI

Vasta Stone è la superficie compatta e sinterizzata nuova e rivoluzionaria nata per dare una risposta alle esigenze architettoniche di design e arredo.

THICKNESSES | SPESSORI



Vasta Stone is the result of a selection of the best raw materials and a revolutionary and highly technological production process, the Sintering. Thanks to these elements and extensive quality control along the entire production chain, a compact surface is achieved large size and minimum thickness, with extraordinary characteristics.

Vasta Stone is a 100% natural material with characteristics extraordinary physical-mechanical, suitable for endless applications.

Vasta Stone è frutto di una selezione delle migliori materie prime e di un processo di produzione rivoluzionario e altamente tecnologico, la Sinterizzazione.

Grazie a questi elementi e a numerosi ed esaurienti controlli di qualità lungo tutta la catena di produzione, si ottiene una superficie compatta di grande formato e spessore minimo, dalle straordinarie caratteristiche.

Vasta Stone è un materiale naturale al 100% dalle caratteristiche fisico-meccaniche straordinarie, idonea per infinite applicazioni.

EXTRAORDINARY CHARACTERISTICS | STRAORDINARIE CARATTERISTICHE

FROST-RESISTANT
RESISTENTE AL GELO

HEAT-RESISTANT
RESISTE AL CALORE

HEALTHY
SALUBRE

NON-ABSORBENT
NON ASSORBE

EASY TO CLEAN
FACILE DA PULIRE

RESISTANT TO ACIDS
RESISTENTE AGLI ACIDI

FIRE-RESISTANT
IGNIFUGO

WIDE RANGE OF STYLES
AMPIA GAMMA DI STILI

LIGHT
LEGGERO

EASY TO HANDLE
FACILE DA MOVIMENTARE

LASTING BEAUTY
INALTERABILE NEL TEMPO

RESISTANT TO UV RAYS
RESISTE AI RAGGI UV

SINTERED STONE TECHNICAL SHEET | TABELLE TECNICHE PIETRA SINTERIZZATA

VASTA STONE QUALITY STANDARDS

PROPERTIES	TEST METHOD	STANDARD
Size	ISO 10545-2	±0.3mm
Water absorption rate	ISO 10545-3	<0.5%
Breaking strength	ISO 10545-4	> 750N (6mm)
		>1800N (12mm)
		> 5000N (20mm)> 750N (6mm)
		>1800N (12mm)
Moduius of rupture	ISO 10545-4	> 5000N (20mm)
		>32MPa
Wear resistance	ISO 10545-7	PEI III
Thermal shock resistance	ISO 10545-9	Ten passes
Crazing resistance	ISO 10545-11	Pass
Freezing test	ISO 10545-12	100 passes

CHEMICAL PROPERTIES

Resistance to staining

a) Green staining agent in light oil	ISO 10545-14	Class 5
b) Iodine, 13g/L solution in alcohol	ISO 10545-14	Class 5
c) Olive oil	ISO 10545-14	Class 5

Resistance to chemicals

Resistance to household chemicals and swimming pool salts

a) Household chemicals: Ammonium chloride, 100mg/L	ISO 10545-13	GA
b) Swimming pool salts: Sodium hypochlorite solution, 20mg/L	ISO 10545-13	GA

Resistance to low concentrations of acids and alkalis

a) Hydrochloric acid solution, 3% (v/v)	ISO 10545-13	GLA
b) Citric acid solution, 100g/L	ISO 10545-13	GLA
c) Potassium hydroxide, 30g/L	ISO 10545-13	GLA

PACKING DETAILS

SIZE	SLABS/CRATE	M ² /CRATE	KG/CRATE	CRATE SIZE
1200x2400x6	60	172,8	2520	1300x2600x750
1200x2400x12	30	86,4	2490	1300x2600x750
800x3200x6	60	153,6	2220	900x3400x750
800x3200x20	18	46,08	2214	900x3400x750
1200x2800x6	60	201,6	2880	1300x3000x750
1600x2800x6	60	268,8	3900	1700x3000x750
1600x3200x6	60	307,2	4440	1700x3400x750
1600x3200x20	18	92,16	4428	1700x3400x750

